

# Super Custom Indicator - Manual Guide

## 1. Introduction:

Super Custom Indicator allows you to design trading signals on your own without coding knowledge. You just need to input the trading rules and it will scan multiple symbols at multiple time frames to find the signals for you in real-time as well as in history chart. Real-time signals will be sent to your mobile and email also.

The indicator can calculate and analyze every technical indicator, even custom indicators, with complex operations to give the signal exactly.

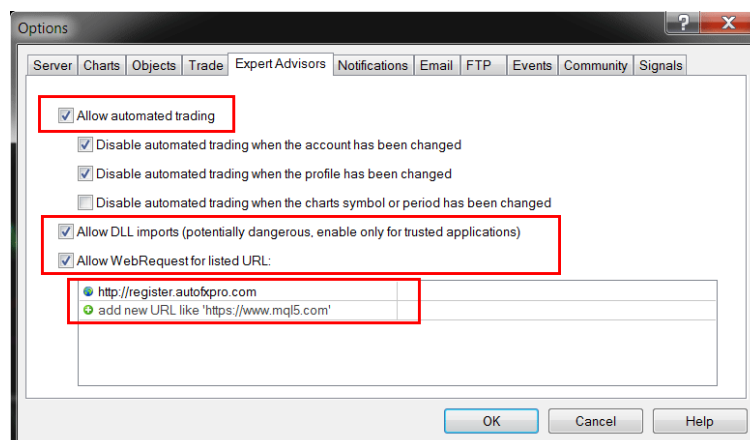
Normally, it is hard for you to monitor signals of few symbols on few time frames at the same time. But now, you only need one chart with this indicator. It will monitor everything for you with just a neat table. This will save your time and effort in trading.

Furthermore, with this indicator, you can test quickly every strategy you find and know if it's good or not just in minutes.



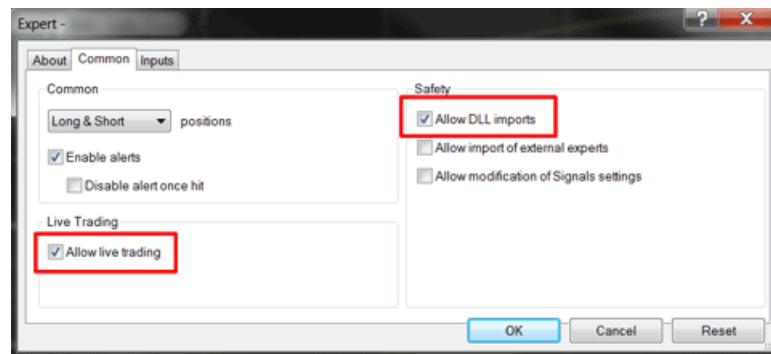
## 2. Installation:

- Unzip the product's package, you will see the "AutoFxPro.com – Super Custom Indicator.ex4" file.
- Open your provider MT4 platform -> Main menu -> Tools -> Options -> Expert Advisors -> Enable "Allow automated trading", "Allow DLL imports", "Allow WebRequest for listed URL", and add URL "http://register.autofxpro.com" as following:

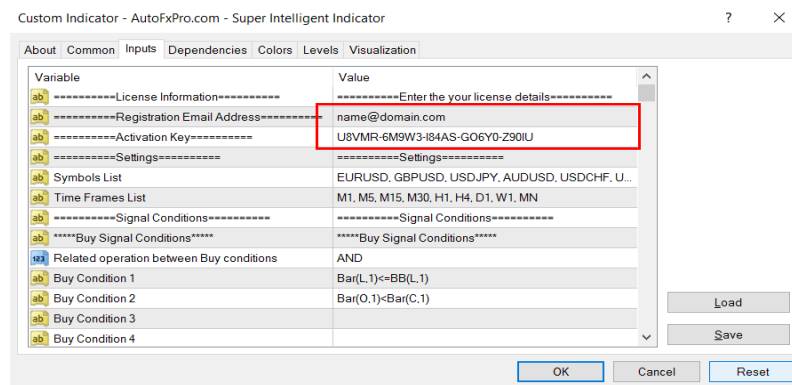


- Go to MT4 data folder by opening MT4 terminal -> Main menu -> Files -> Open Data Folder. It will open data folder of your terminal.

- Copy file "AutoFxPro.com - Super Custom Indicator.ex4" to directory path: /[data folder]/MQL4/Indicators/.
- Go back to MT4 terminal -> Main Menu -> View -> Navigator -> Right click on Indicators folder -> Refresh -> Find "AutoFxPro.com - Super Custom Indicator" -> Double click or drag it into any chart.
- At startup window -> Common tab -> Enable "Allow DLL imports" and "Allow live trading" check box.



- Switch to Input tab, enter your registered email address and activation key in order to activate your license. You just need to enter your license for each account at a particular MT4 one first time. It will remember your license info, so just leave the license blank next times.

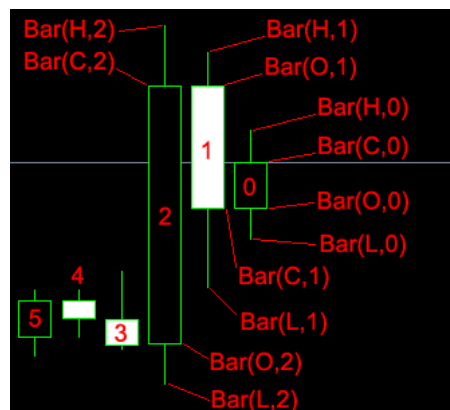


### 3. Input setting parameters:

- **Common Settings:** This is where to setup the parameters for symbols and time frames.
  - **Symbol List:** List of all symbols that you want to find the signal with. The symbols can be separated by coma (,) or semicolon (;). If you leave it blank, the indicator will take the symbol of current chart.
  - **Time Frames List:** List of all time frames that you want to find the signal with. The time frames can be separated by coma (,) or semicolon (;). If you leave it blank, the indicator will take the current time frame of current chart.
- **Signal Conditions/Rules:** This is where to setup the trading conditions/rules for your strategy. You can add up to 10 different conditions/rules for Buy and Sell signals. Please note that the default signal condition is just an example, it's not necessary that it's a winning signal.
  - **Related operation between Buy/Sell conditions:** You can combine conditions by a related operation, either AND or OR.

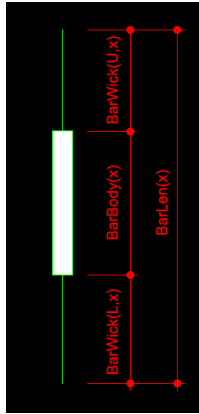
- **Conditions:** This is the most important part of this indicator. It determines how the signals will be shown. You must write your strategy's entry conditions/rules here. Elements in the conditions can be value of any technical indicator, candlestick/bar's price or any number. They must be written strictly follow the syntax format, which is instructed in later part.
- **Bar & Indicators Settings/Examples:** This is where to setup the parameters applied for technical indicators. You can find every built-in technical indicators and even custom indicator here. There are examples of how to call the bars/indicators in the signal condition. Followings are the indicators supported (including bar):
  - **Bar/Candle Stick Price:** Call the price of an element of a bar/candlestick at a specific shift on the chart.
    - **Open Price:** Bar(O,x).
    - **Close Price:** Bar(C,x).
    - **High Price (Upper shadow/wick):** Bar(H,x).
    - **Low Price (Lower shadow/wick):** Bar(L,x).

In which, x is the bar-shift backward from the current bar. Current bar shift is 0.

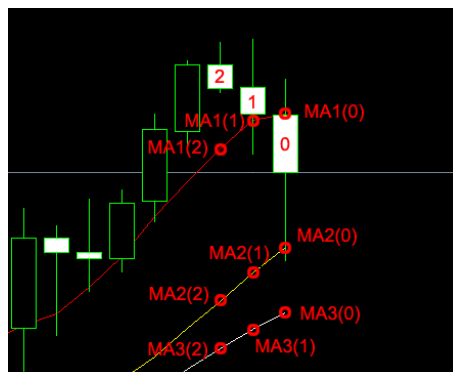


- **Bar/Candle Measurement:** Call the measurement in pips/points of a bar/candlestick at a specific shift on the chart.
  - **Length of whole bar (from lower wick to upper wick):** BarLen(x).
  - **Body length of the bar:** BarBody(x).
  - **Length of the upper shadow/wick of the bar:** BarWick(U,x).
  - **Length of the lower shadow/wick of the bar:** BarWick(L,x).

In which, x is the bar-shift backward from the current bar. Current bar shift is 0.



- **Bar/Candle Time:** Call time of a bar/candlestick at a specific shift on the chart.
  - **The minute of a bar:** Minute(x). This is only effective with time frame M1.
  - **The hour of a bar:** Hour(x). This is only effective with time frame from H1 or lower.
  - **The day of the week of a bar:** Day(x). This is only effective with time frame D1 or lower.
- **Moving Average (MA):** Call the moving average price at a specific bar on the chart. You can call up to 3 different MAs in case there are multiple MAs in your strategy. Example: MA1(x), MA2(x), MA3(x).



- **Relative Strength Index (RSI):** Call the RSI value at a specific bar on the chart. Example: RSI(x).
- **Stochastic Oscillator (Sto):** Call the Stochastic oscillator values at a specific bar on the chart. You can call either main or signal line of the Stochastic. Example:
  - **Main line value at (x) bar backward:** Sto(M,x).
  - **Signal lin value at (x) bar backward:** Sto(S,x).
- **Average Direction Movement Index (ADX):** Call the ADX values at a specific bar on the chart. You can call either main or +DI or -DI line of the ADX. Example:
  - **Main line value at (x) bar backward:** ADX(M,x).
  - **+DI line value at (x) bar backward:** ADX(+,x).
  - **-DI line value at (x) bar backward:** ADX(-,x).

- **Bollinger Bands (BB):** Call the Bollinger Bands prices at a specific bar on the chart. You can call either main or upper or lower line of the Bollinger Bands. Example:
  - **Main line value at (x) bar backward:** BB(M,x).
  - **Upper line value at (x) bar backward:** BB(U,x).
  - **Lower line value at (x) bar backward:** BB(L,x).
- **MACD:** Call the MACD values at a specific bar on the chart. You can call either main histogram or signal line of the MACD. Example:
  - **Main histogram value at (x) bar backward:** MACD(M,x).
  - **Signal line value at (x) bar backward:** MACD(S,x).
- **Commodity ChaneI Index (CCI):** Call the CCI values at a specific bar on the chart. Example: CCI(x).
- **Parabolic SAR (PSAR):** Call the PSAR price at a specific bar on the chart. Example: PSAR(x).
- **ZigZag (ZZ):** Call the top or bottom of ZigZag at a specific sequence on the chart. Example:
  - **The ZigZag top price at (x) sequence backward from the current bar:** ZZ(T,x).
  - **The ZigZag bottom price at (x) sequence backward from the current bar:** ZZ(B,x).

**Note:** Because ZigZag is a re-painted indicator, a Top/Bottom is only fixed when a next Bottom/Top appear on the chart.
- **Ichimoku Kinko Hyo (Ichi):** Call the Ichimoku's elements at a specific bar on the chart . You can call one of the Ichimoku's elements. Example:
  - **Tenkan-sen line at (x) bar backward:** Ichi(T,x).
  - **Kijun-sen line at (x) bar backward:** Ichi(K,x).
  - **Senkou Span A cloud at (x) bar backward:** Ichi(A,x).
  - **Senkou Span B cloud at (x) bar backward:** Ichi(B,x).
  - **Chikou Span line at (x) bar backward:** Ichi(C,x).
- **Average True Range (ATR):** Call the ATR value at a specific bar on the chart. Example: ATR(x).
- **Standard Deviation (Std):** Call the Standard Deviation value at a specific bar on the chart. Example: Std(x).
- **Envelopes (Env) :** Call the Standard Deviation value at a specific bar on the chart. Example: Std(x).
- **Bulls Power (Bull) :** Call the Bulls Power value at a specific bar on the chart. Example: Bull(x).
- **Bears Power (Bull) :** Call the Bears Power value at a specific bar on the chart. Example: Bear(x).
- **Moving Average of Oscillators (OsMA) :** Call the OsMA value at a specific bar on the chart. Example: OsMA(x).

- **Momentum (Mom):** Call the Momentum value at a specific bar on the chart. Example: Mom(x).
- **William's Percent Range (Will):** Call the William's Percent Range value at a specific bar on the chart. Example: Will(x).
- **Relative Vigor Index (RVI):** Call the RVI values at a specific bar on the chart. You can call either upper or lower line of the RVI. Example:
  - **Upper line value at (x) bar backward:** RVI(U,x).
  - **Lower line value at (x) bar backward:** RVI(L,x).
- **DeMarker (DeM):** Call the DeMarker value at a specific bar on the chart. Example: DeM(x).
- **Force Index (Force):** Call the Force Index value at a specific bar on the chart. Example: Force(x).
- **Alligator (Alli):** Call the Alligator's line values at a specific bar on the chart. You can call either Jaw or Teeth or Lips of the Alligator. Example:
  - **Jaw line value at (x) bar backward:** Alli(J,x).
  - **Teeth line value at (x) bar backward:** Alli(T,x).
  - **Lips line value at (x) bar backward:** Alli(L,x).
- **Gator Oscillator (Gat):** Call the Gator Oscillator's histogram values at a specific bar on the chart. You can call either upper or lower histogram of the Gator Oscillator. Example:
  - **Upper histogram value at (x) bar backward:** Gat(U,x).
  - **Lower histogram value at (x) bar backward:** Gat(L,x).
- **Money Flow Index (MFI):** Call the Money Flow Index value at a specific bar on the chart. Example: MFI(x).
- **On Balance Volume (OBV):** Call the On Balance Volume value at a specific bar on the chart. Example: OBV(x).
- **Awesome Oscillator (AO):** Call the Awesome Oscillator histogram value at a specific bar on the chart. Example: AO(x).
- **Accelerator Oscillator (AC):** Call the Accelerator Oscillator histogram value at a specific bar on the chart. Example: AC(x).
- **Fractals (Frac):** Call the Fractals Up(Top) or Down(Bottom) at a specific sequence on the chart. Example:
  - **The Fractals Up(Top) price at (x) sequence backward from the current bar:** Frac(U,x).
  - **The Fractals Down(Bottom) price at (x) sequence backward from the current bar:** Frac(D,x).
- **Heiken Ashi (HA):** Call the price of an element of a Heiken Ashi bar/candlestick at a specific shift on the chart.
  - **Open Price:** HA(O,x).
  - **Close Price:** HA(C,x).

- **High Price (Upper shadow/wick):** HA(H,x).
- **Low Price (Lower shadow/wick):** HA(L,x).
- **Bill Williams Market Facilitation Index (BWMFI):** Call the BWMFI histogram's element value at a specific bar on the chart. Example:
  - **BWMFI value Up & Volume Up (Green):** BWMFI(UU,x). Market is already on the move. You should trade in the same direction of the market.
  - **BWMFI value Down & Volume Down (Fade):** BWMFI(DD,x). Market loses its movement energy. You should wait until the market resume and decide to the next move.
  - **BWMFI value Up & Volume Down (Fake):** BWMFI(UD,x). Market has a larger move with lower volume. This can be a fake move and tend to a trend reversal.
  - **BWMFI value Down & Volume Up (Squat):** BWMFI(DU,x). Market gets confused since a lot of participants of both sides jump in with different directions. Once a side wins, the market tend to have a significant move in that direction.
- **Accumulation/Distribution (AD):** Call the Accumulation/Distribution value at a specific bar on the chart. Example: AD(x).
- **Tick Volume (Vol):** Call the Tick Volume value at a specific bar on the chart. Tick Volume is times that counted when the Bid/Ask price change in a period. Example: Vol(x).
- **Custom Indicator (Custom):** Call any custom indicator's value that installed into your MT4. You must know the buffer index of the element that you want to call. If it has only one element (e.g: single line), the buffer index is probably zero (0). Follow is syntax format to call a custom indicator:

**Custom([Indicator name],[para1],[para2],[para3],...,para[n],[buffer index],[bar-shift])**

**Example:** Custom(My indicator,14,3,3,0,1) will call the buffer 0 value of indicator "My indicator" with input parameters (14,3,3) at previous bar.

- **Alert Settings:** This is where to setup the alert options when a signal appear.
  - **Alert Header:** It is used in the title of the alert in order to distinguish from alerts of other tools.
  - **Alert On Screen:** Alert will popup on your MT4's screen.
  - **Alert To Mobile:** Alert will be sent to mobile devices with MetaQuotes ID setup in Notifications setting of your MT4.
  - **Alert To Email:** Alert will be sent to email address setup in Email setting of your MT4.
  - **Alert Timezone:** The timezone that will be used in timestamp of the alert.
- **Interface Settings:** This is where to setup the interface options for the indicator, such as font size, color of arrows, color of table, size of table, etc.,.

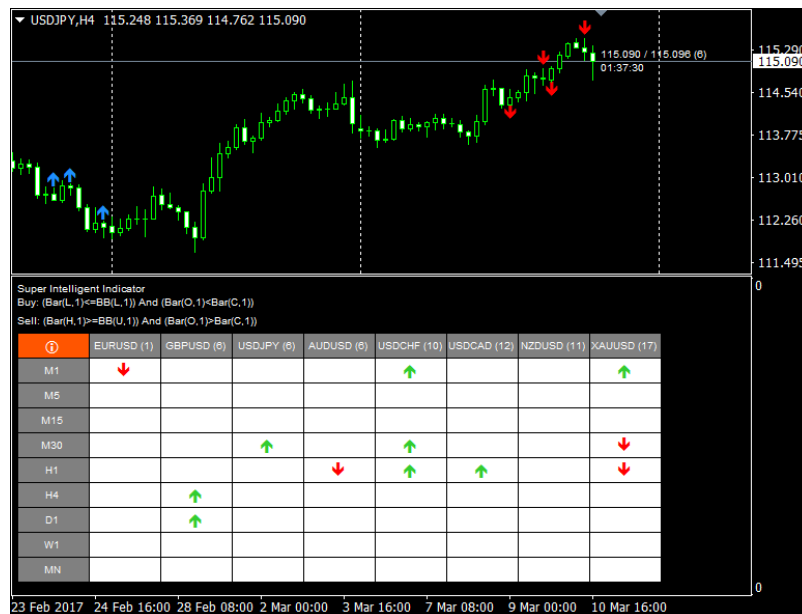
#### 4. Supported Mathematic Operations:

- **Plus (+):** Plus between elements. Example: Bar(C,1)+ATR(1).
- **Minus (-):** An element minus another. Example: Bar(H,1)-Bar(L,1).
- **Multiply (\*):** Multiply an element by another. Example: ATR(2)\*3.
- **Divide (/):** An element is divided by another. Example: MACD(0)/2.
- **Equal (=):** An element is equal to another. Example: Bar(C,0)=MA1(0).
- **Larger (>):** An element is larger than another. Example: RSI(1)>70.
- **Smaller (<):** An element is smaller than another. Example RSI(2)<30.
- **Equal or Larger (>=):** An element is equal or larger than another. Example: Sto(M,2)>=80.
- **Equal or Smaller (<=):** An element is equal or smaller than another. Example: Sto(M,2)<=20.
- **Maximum (Max):** Maximum value of an array of elements. Example: Max(MA1(1);MA2(1);MA3(1)).
- **Minimum (Min):** Minimum value of an array of elements. Example: Min(Bar(O,1);Bar(C,1)).
- **Absolute (Abs):** Absolute value of an element. Example: Abs(Bar(O,1)-Bar(C,1)).



## 5. Usage:

After installed the indicator on your chart, it will show up in a separated window like this:

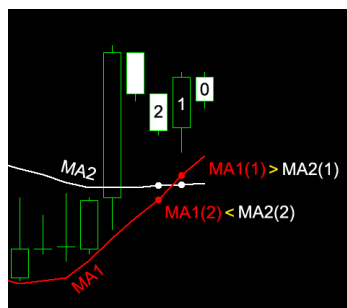


The top-row of the table will show all listed symbols and the left side-column will show all listed time frames. If there is any Buy/Sell signal that meet the defined conditions at the moment (current bar), it will show an Up/Down arrow at the corresponding cell of the table. You can click to any cell to jump to corresponding symbol and time frame.

At the same time, you can check all history signals of the symbol on current time frame of the current chart. The open price of the candle that the arrow appear is where the signal confirmed.

## 6. Condition Samples:

- **MA1 cross MA2 from below:**
  - **Condition 1:**  $MA1(x) > MA2(x)$
  - **Condition 2:**  $MA1(x+1) < MA2(x+1)$



- **RSI goes down from above 70 level:**
  - **Condition 1:**  $RSI(x+1) > 70$
  - **Condition 2:**  $RSI(x) < 70$

